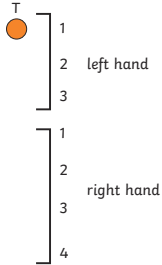
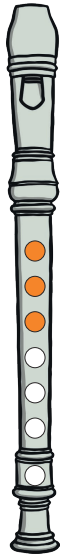
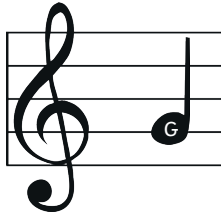


Fingering Chart for Recorders

G

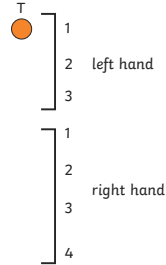
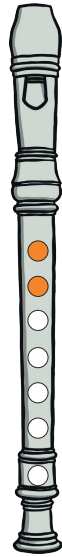
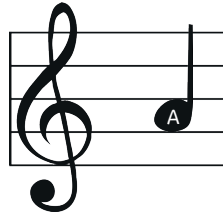


- = open hole
- ◐ = half open
- = closed hole
- ◑ = a little open



Fingering Chart for Recorders

A

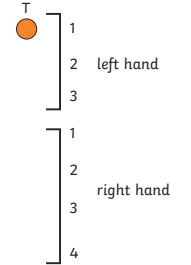
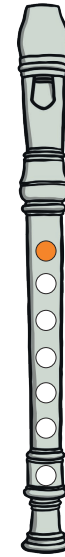
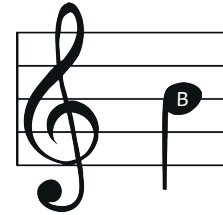


- = open hole
- ◐ = half open
- = closed hole
- ◑ = a little open



Fingering Chart for Recorders

B

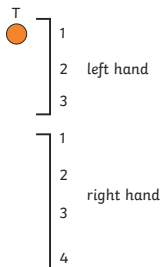
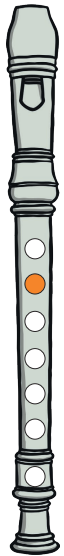
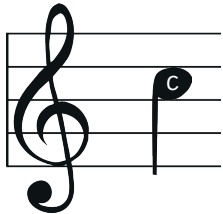


- = open hole
- ◐ = half open
- = closed hole
- ◑ = a little open



Fingering Chart for Recorders

C

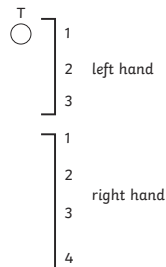
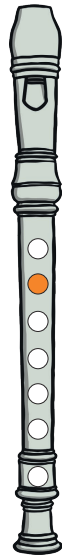
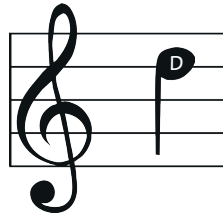


- = open hole
- ◐ = half open
- = closed hole
- ◑ = a little open



Fingering Chart for Recorders

D



- = open hole
- ◐ = half open
- = closed hole
- ◑ = a little open

