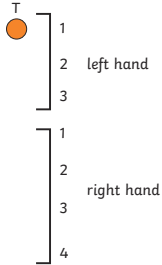
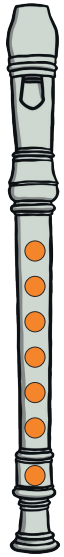
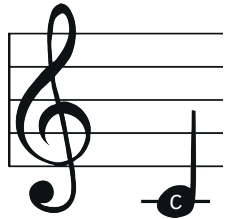


## Fingering Chart for Recorders

# C

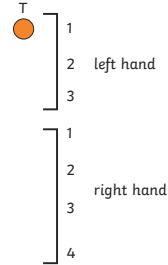
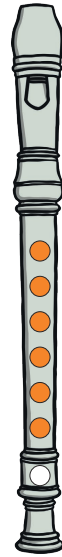
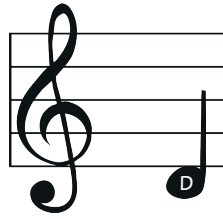


- = open hole
- ◐ = half open
- = closed hole
- ◑ = a little open



## Fingering Chart for Recorders

# D

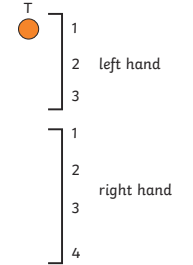
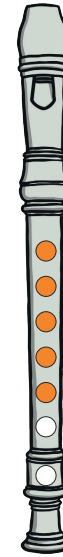
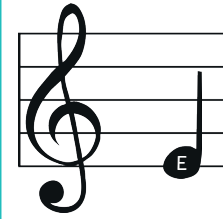


- = open hole
- ◐ = half open
- = closed hole
- ◑ = a little open



## Fingering Chart for Recorders

# E

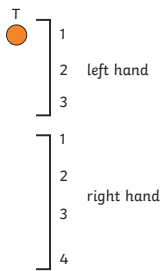
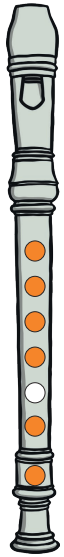
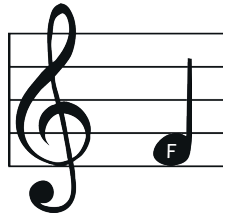


- = open hole
- ◐ = half open
- = closed hole
- ◑ = a little open



## Fingering Chart for Recorders

# F

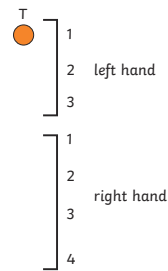
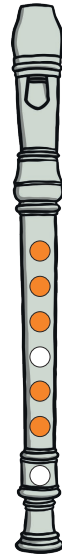
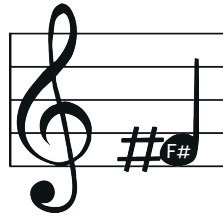


- = open hole
- ◐ = half open
- = closed hole
- ◑ = a little open



## Fingering Chart for Recorders

# F#

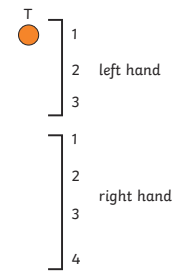
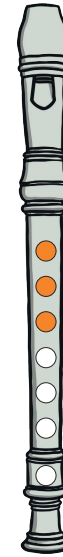
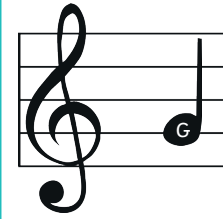


- = open hole
- ◐ = half open
- = closed hole
- ◑ = a little open



## Fingering Chart for Recorders

# G

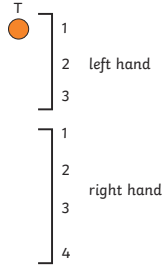
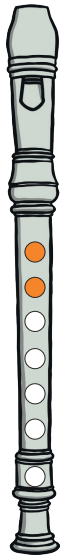
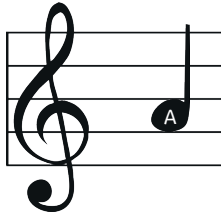


- = open hole
- ◐ = half open
- = closed hole
- ◑ = a little open



## Fingering Chart for Recorders

# A

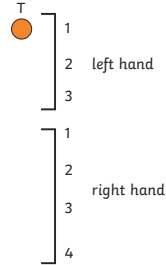
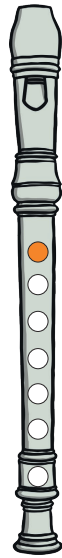
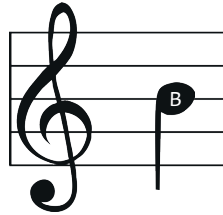


- = open hole
- ◐ = half open
- = closed hole
- ◑ = a little open



## Fingering Chart for Recorders

# B

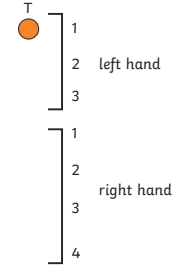
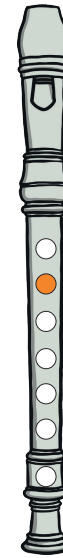
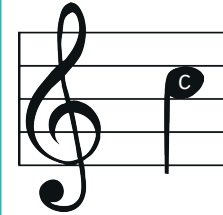


- = open hole
- ◐ = half open
- = closed hole
- ◑ = a little open



## Fingering Chart for Recorders

# C

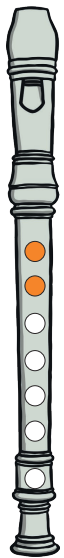
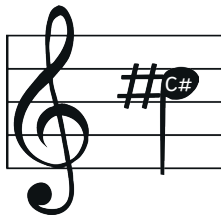


- = open hole
- ◐ = half open
- = closed hole
- ◑ = a little open



## Fingering Chart for Recorders

# C#

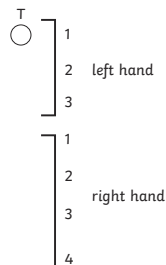
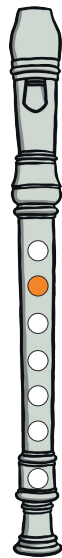
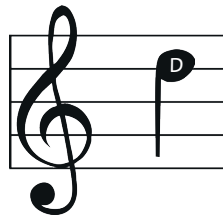


- = open hole
- ◐ = half open
- = closed hole
- ◑ = a little open



## Fingering Chart for Recorders

# D

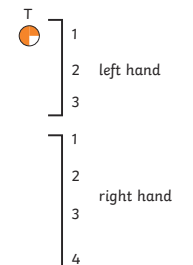
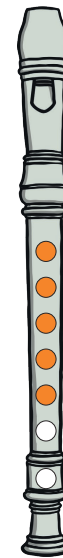
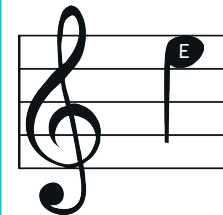


- = open hole
- ◐ = half open
- = closed hole
- ◑ = a little open



## Fingering Chart for Recorders

# E



- = open hole
- ◐ = half open
- = closed hole
- ◑ = a little open

