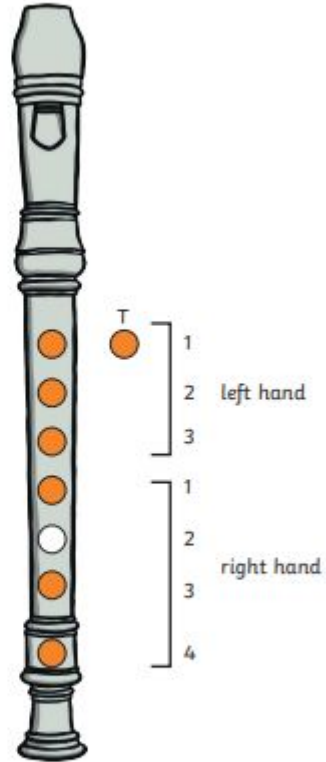
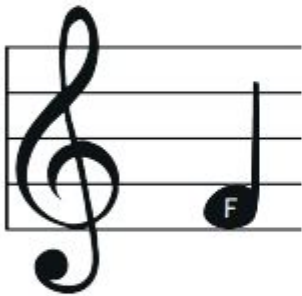


Let's practice some LOW notes

## Fingering Chart for Recorders

# F



- = open hole
- ◐ = half open
- = closed hole
- ◑ = a little open



## Fingering Chart for Recorders

# E

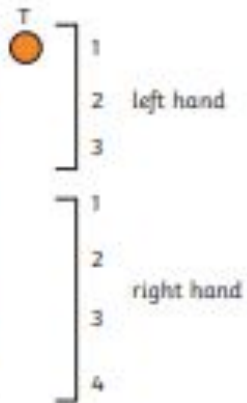


- = open hole
- = half open
- = closed hole
- = a little open



## Fingering Chart for Recorders

# D

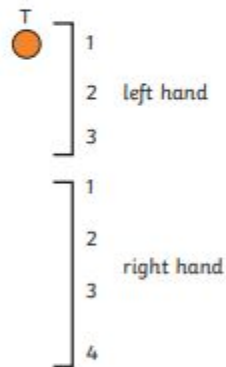
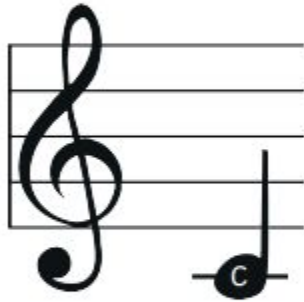


- = open hole
- ◐ = half open
- = closed hole
- ◑ = a little open

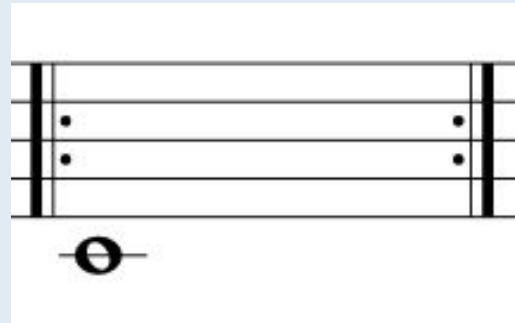


# Fingering Chart for Recorders

# C



- = open hole
- ◐ = half open
- = closed hole
- ◑ = a little open



# C major scale



**C D E F G A B C B A G F E D C**